



'to ensure that every child has an amazing playtime every day with no exceptions'. (OPAL CIC)



Spring Term Review 2026

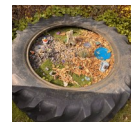
Welcome to our latest Opal newsletter, reviewing latest additions and changes to our Opal provision and sharing next steps with our school community. The weather is beginning to improve, but we know there will still be days where wellies and waterproofs are needed so please continue to ensure your child has their wellies and waterproofs in school where possible.

Play Assemblies and Play Champions

This term, our Year Two Opal Champions have embraced the challenge of helping to plan, prepare and deliver our Play Assemblies. The Play Champions meet once a week every fortnight to talk about what is going well, anything they have noticed they feel needs sharing that's not going so well and to talk about changes to areas or new areas/resources and how to introduce these to the rest of the school. They have badges to identify them and we are currently looking into making them easier to identify outside with either hats or hi-vis jackets. The children would like these to have the logo and 'Play Champion' title on them. Please let us know if you can recommend a source or help in any way with these.

Area updates

We continue to adapt and develop play opportunities for the children, listening to what they want and considering the 16 different types of play. During Spring Term, the greatest change has been the improvement of our sand provision, with the installation of a larger sandpit (as well as our smaller sand trays which the children requested we keep too) made possible by a generous donation from Ryedale Lions and time given by Mr Kelly to create the sandpit, as well as pallet storage for the sand and water areas. The fairy garden has had a makeover, we have a second rickshaw and our small world resources have been updated with donations of items from families and through the Give and Take Days held locally (recycling at it's best!)



Next steps

We continue to search for a length of large plastic drainage piping to create a tunnel and hill area. If anyone has any contacts with developers of new homes or anywhere else that might provide us with a length of piping, please let Mrs Carter know through the school office or in person. We are also wanting a couple of slides (to use without the frame) and some medium/large wooden cable reels to add to our large loose parts if anyone can help please.

Your ongoing support—thank you!

Thank you to the families that joined us for our extended play for KS1 this term, as part of our outdoor learning morning. Look out for future opportunities, including more stay and play events in the Summer Term. There are often things we are looking for to develop play opportunities for the children so please do keep looking on the newsletters and social media for items we are needing. We would also appreciate help with our bigger projects, so if you have a skill or interest you think could help us, please do let us know. Finally, please take the time to complete our Opal survey coming to you via Parentmail in April, your views matter too.